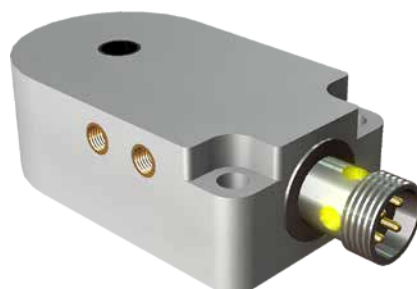


3-Wire
3-Leiter

Ø 6.1 mm
adjustable
einstellbar

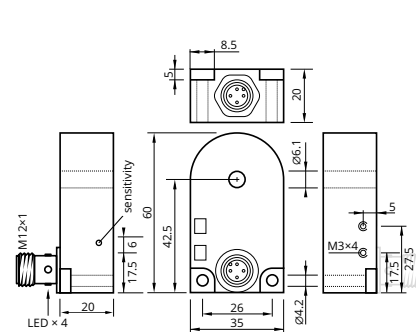
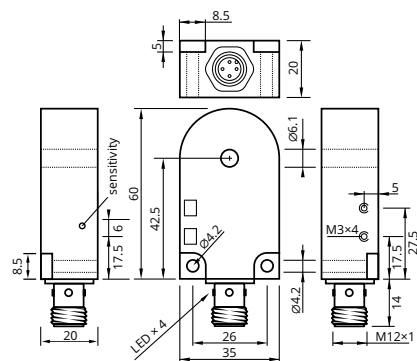


static
statisch

Ø 6.1 mm
adjustable
einstellbar



static
statisch

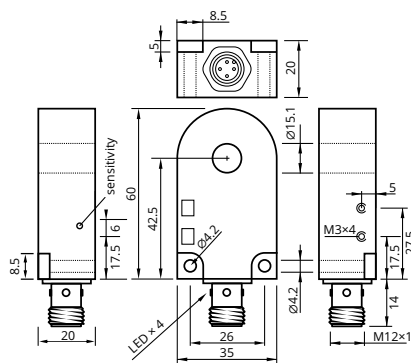


Resolution	Auflösung	adjustable	einstellbar	adjustable	einstellbar
Ring Diameter	Ringdurchmesser	Ø 6.1 mm		Ø 6.1 mm	
Operating Voltage	Betriebsspannung	10...30 V _{DC}		10...30 V _{DC}	
Reverse Polarity Protection	Verpolungsschutz	built-in	integriert	built-in	integriert
Current Consumption	Stromverbrauch	<10 mA		<10 mA	
Current Load Capability	Ausgangsbelaubarkeit	200 mA		200 mA	
Short Circuit Protection	Kurzschlusschutz	built-in	integriert	built-in	integriert,
Voltage Drop	Spannungsabfall	<2 V @ 200 mA		<2 V @ 200 mA	
Adjustment	Einstellung	multi turn pot.	Mehrgangpoti	multi turn pot.	Mehrgangpoti
Operating Temperature	Betriebstemperatur	-25...+70°C		-25...+70°C	
Protection Class	Schutzklasse	IP67		IP67	
Sensing Face	Sensorfläche	PBT		PBT	
Housing Material	Gehäusewerkstoff	PA 6.6		PA 6.6	
Connection	Anschluss	conn. M12	Stecker M12	conn. M12	Stecker M12
Switching Indicator	Schaltanzeige	built-in	integriert	built-in	integriert
Article Code PNP, NO	—/—	KR 06 PSK-ST4		KR 06 PSK-R-ST4	
Article Code PNP, NC	—/—	KR 06 POK-ST4		KR 06 POK-R-ST4	
Article Code NPN, NO	—/—	KR 06 NSK-ST4		KR 06 NSK-R-ST4	
Article Code NPN, NC	—/—	KR 06 NOK-ST4		KR 06 NOK-R-ST4	

Ø 10.1 mm
adjustable
einstellbar



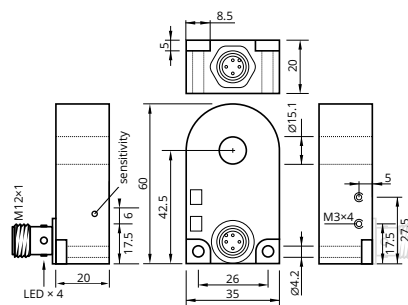
static
statisch



Ø 10.1 mm
adjustable
einstellbar



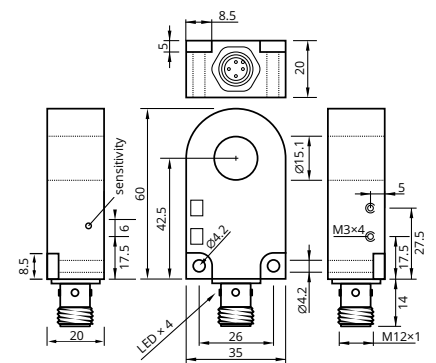
static
statisch



Ø 15.1 mm
adjustable
einstellbar



static
statisch



adjustable einstellbar

Ø 10.1 mm

10...30 V_{DC}

built-in integriert

<10 mA

200 mA

built-in integriert

<2 V @ 200 mA

multi turn pot. Mehrgangpoti

-25...+70°C

IP67

PBT

PA 6.6

conn. M12 Stecker M12

built-in integriert

KR 10 PSK-ST4

KR 10 POK-ST4

KR 10 NSK-ST4

KR 10 NOK-ST4

adjustable einstellbar

Ø 10.1 mm

10...30 V_{DC}

built-in integriert

<10 mA

200 mA

built-in integriert

<2 V @ 200 mA

multi turn pot. Mehrgangpoti

-25...+70°C

IP67

PBT

PA 6.6

conn. M12 Stecker M12

built-in integriert

KR 10 PSK-R-ST4

KR 10 POK-R-ST4

KR 10 NSK-R-ST4

KR 10 NOK-R-ST4

adjustable einstellbar

Ø 15.1 mm

10...30 V_{DC}

built-in integriert

<10 mA

200 mA

built-in integriert

<2 V @ 200 mA

multi turn pot. Mehrgangpoti

-25...+70°C

IP67

PBT

PA 6.6

conn. M12 Stecker M12

built-in integriert

KR 15 PSK-ST4

KR 15 POK-ST4

KR 15 NSK-ST4

KR 15 NOK-ST4