



Leichte Montage der
Anschlusssteile
durch Vorarretierung
des Verschlusses

Easy mounting with
pre-locking mechanism

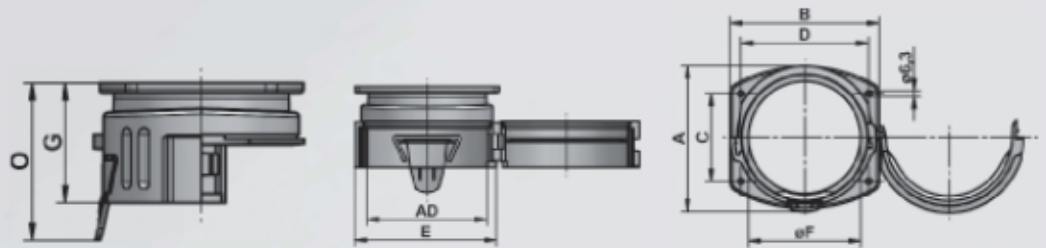


Einteiliger Flanschanschluss gerade für Kabelsammler ROHRflex® Multi



- beständig gegen viele Öle und Benzine
- weitgehend säure- und
Lösungsmittelbeständig
- halogen- silikon-, cadmiumfrei
- selbstverlöschend
- flammwidrig
- mit Spezialdichtungen Schutzart
IP 65, IP 68, IP 69K

One-part flange connector straight for cable buncher ROHRflex® Multi

- resistant against several oils and benzines
- widely resistant to acids and solvents
- free of silicone, cadmium, halogen
- self-extinguishing
- flame resistant
- for higher protective system
IP 65, IP 68, IP 69K
special sealings are available



ELECTRO-PRODUCTS CORP.
1-800-350-7937 | www.ibisep.com | info@ibisep.com

| FLEXA No. | FLEXA No. | LW ID | | | | | | | | |  |  |
|------------------|--------------|----------|---------|---------|---------|---------|---------|---------|----------|-------------------------|---|---|
| schwarz black | grau grey | ø | A mm | B mm | C mm | D mm | E mm | G mm | øF mm | kg/100 | St. Pcs. | |
| Multi-GFP | | | | | | | | | | IP 54 ... IP 69K | | |
| 5032.206.070 | 5032.006.070 | 70 | 94,0 | 96,0 | 60,5 | 80,5 | 96,4 | 65,5 | 68 | 13,000 | 1 | |
| 5032.206.095 | 5032.006.095 | 95 | 120,0 | 126,0 | 74,0 | 108,0 | 123,0 | 70,5 | 85 | 18,000 | 1 | |