

V2 [UL 94]

-50 °C ... +100 °C ^ +150 °C



ROHRflex® PA 12-F

Vollkunststoff-Wellenschlauch
hochflexibel, flammwidrig
Innen und außen gewellt

Material
Kunststoff [PA 12]

Eigenschaften

- hohe Wechselbiegefestigkeit
- gute Isolationseigenschaften
- luft- und flüssigkeitsdicht
- öl- und benzinbeständig
- weitgehend säure- und lösungsmittelbeständig
- silikon-, cadmium-, halogenfrei
- selbstverlöschend
- flammwidrig
- UV-beständig
- EN 45545-2 HL3 für R22/R23

Corrugated all-plastic tubing
highly flexible, flame retardant
Internally and externally corrugated

Material
plastics [PA 12]







Properties

- high alternate bending strength
- improved insulation properties
- air- and liquid-tight
- oil and benzine resistant
- widely resistant to acids and solvents
- free of silicone, cadmium, halogen
- self-extinguishing
- flame retardant
- UV-resistant
- EN 45545-2 HL3 for R22/R23

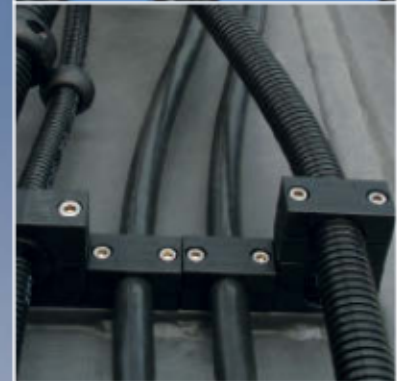


ELECTRO-PRODUCTS CORP.

1-800-350-7937 | www.ibisep.com | info@ibisep.com

FLEXA No.	AD OD					
schwarz black	ø	mm	stat	dyn	kg/m	m
schmales Profil fine profile						
0249.202.006 *	10,0	6,5 x 10,0	13	35	0,020	50
0249.202.010 *	13,0	10,0 x 13,0	15	45	0,029	50
0249.202.012 *	15,8	12,0 x 15,8	22	55	0,035	50
0249.202.016 *	21,2	16,5 x 21,2	35	75	0,060	50
0249.202.023 *	28,5	23,0 x 28,5	45	100	0,100	50
0249.202.029 *	34,5	29,0 x 34,5	50	120	0,127	25
0249.202.036 *	42,5	36,0 x 42,5	80	150	0,158	25
0249.202.048 *	54,5	48,0 x 54,5	100	190	0,239	25
breites Profil coarse profile						
0249.232.016 *	21,2	15,5 x 21,2	45	75	0,075	50
0249.232.023 *	28,5	22,0 x 28,5	55	100	0,108	50
0249.232.029 *	34,5	27,5 x 34,5	65	120	0,132	25
0249.232.036 *	42,5	35,5 x 42,5	90	150	0,145	25
0249.232.048 *	54,5	47,0 x 54,5	100	190	0,217	25

* Lieferzeit auf Anfrage
* Delivery time on request



Portrait

ROHRflex
Wellenschlauch

EN 45545-2 (HL 3)

Anwendungsgebiete

- Fahrzeugbau
- Schienenfahrzeuge

Application

- Automotive
- Railway Industry

flexa