

RQW-F RQF2-M

IP 68

-40°C ... +115°C

Portrait

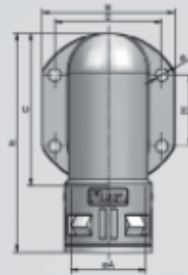
ROHRflex
Conduits

FLEXAquick
Connectors



Kunststoff-Schnellverschraubung
Winkel 90°, Flanschanschluss
inkl. Flanschdichtung

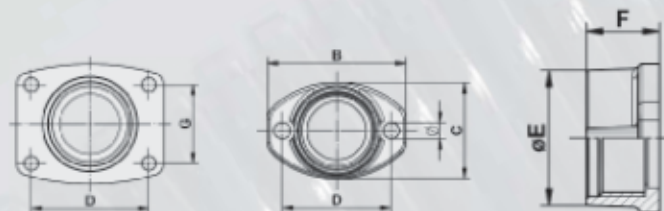
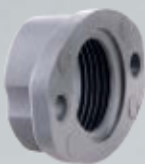
Plastic connector, quick-type
elbow flange 90°
incl. flange-sealing



FLEXA No.	FLEXA No.	AD OD												
schwarz black	grau grey	ø	øA mm	B mm	C mm	D mm	H mm	ø mm	øG mm	F mm	E mm	kg/100	St. Pcs.	
RQW-F												[IP 68]		
5020.077.221	5020.077.021	28,5	27,0	65,5	61,0	53,0		6,6	37	45,0	88,0	5,200	10	
5020.077.229	5020.077.029	34,5	33,0	67,0	77,0	54,0	36,0	6,6	44	50,0	110,0	5,700	10	
5020.077.236	5020.077.036	42,5	38,0	85,0	84,5	73,0	30,0	6,6	52	64,5	104,0	7,800	10	
5020.077.248	5020.077.048	54,5	50,0	86,0	100,0	73,0	30,0	6,6	64	76,0	121,0	10,300	10	
												UL 1696		
												AD/OD 21,2 - 54,5		

Kunststoff-Flansch
passend für alle metrischen
Verschraubungen mit
Außengewinde nach EN 60423

Plastic flange
for all metric connectors
with outer thread acc. to EN 60423



FLEXA No.	FLEXA No.	AD OD													
schwarz black	grau grey	ø		B mm	C mm	D mm	G mm	ø mm	øE mm	H mm	F mm	kg/100	St. Pcs.		
RQF2-M				Metr. EN 60423											
5020.071.225	5020.071.025	21,2, 28,5		M 25 x 1,5	46	32	36	-	5,4	29,5	13,0	15,5	0,660	50	
5020.071.232	5020.071.032	28,5, 34,5		M 32 x 1,5	63	46	52	-	6,6	37,0	16,5	19,0	1,480	25	
5020.071.240	5020.071.040	34,5, 42,5		M 40 x 1,5	67	55	54	36	6,6	45,0	16,0	18,5	1,900	10	
5020.071.250	5020.071.050	42,5, 54,5		M 50 x 1,5	86	64	73	30	6,6	55,0	17,0	20,0	2,500	10	
5020.071.263	5020.071.063	54,5		M 63 x 1,5	86	70	73	30	6,6	68,0	17,0	20,0	2,800	5	

