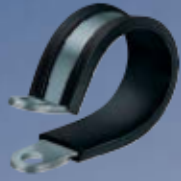


Portrait



ROHRflex  
Conduits



FLEXAquick  
Connectors

Metal  
Conduits

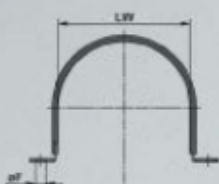
Metal  
Conduits  
liquid tight

Plastic  
Conduits

Special  
Conduits

Connectors

Accessories



**Schlauch-Klemmschelle**




**Material**  
Stahl verzinkt mit Gummiprofil

**Konstruktion**  
Rohrschelle mit Gummiprofil und verstärkten Befestigungsbohrungen

**Tubing-Clamp**

**Material**  
galvanized steel with rubber-profile

**Construction**  
Pipe holder with through hole for fastening with screws

FLEXA No.	AD OD					
	ø	øF mm	D mm	E mm	kg/100	St. Pcs.
<b>SKM</b>						
0308.000.007	10,0	M 5	15,5	15,0	0,380	50
0308.012.013	13,0	M 5	19,0	15,0	0,420	50
0308.000.009	14,0	M 5	19,0	15,0	0,460	50
0308.012.016	15,8	M 5	28,0	15,0	0,640	50
0308.000.011	17,0	M 5	22,0	15,0	0,810	50
0308.012.019	18,5	M 5	25,0	16,0	0,830	50
0308.000.013	19,0 – 20,0	M 5	25,0	16,0	0,860	50
0308.000.016	21,0 – 22,0	M 5	22,0	15,5	0,930	50
0308.000.021	27,0 – 29,0	M 6	35,0	18,0	2,040	50
0308.000.029	34,5 – 36,0	M 6	40,0	18,5	4,380	50
0308.000.036	42,5 – 45,0	M 6	50,0	18,5	7,980	25
0308.000.048	54,5 – 57,0	M 6	74,5	18,5	10,430	25

**Schlauch-Klemmschelle für  
Kabelsammler ROHRflex®-Multi**

**Material**  
Stahl verzinkt mit Gummiprofil

**Konstruktion**  
Rohrschelle mit Gummiprofil und verstärkten Befestigungsbohrungen

**Tubing-Clamp for  
cable buncher ROHRflex®-Multi**

**Material**  
galvanized steel with rubber-profile

**Construction**  
Pipe holder with through hole for fastening with screws

FLEXA No.	LW ID					
		øF mm	ø	E mm	kg/100	St. Pcs.
<b>SKM-Multi</b>						
0308.000.070	70	M 8	79,0	20,0	7,000	1
0308.000.095	95	M 8	105,0	20,0	9,000	1